

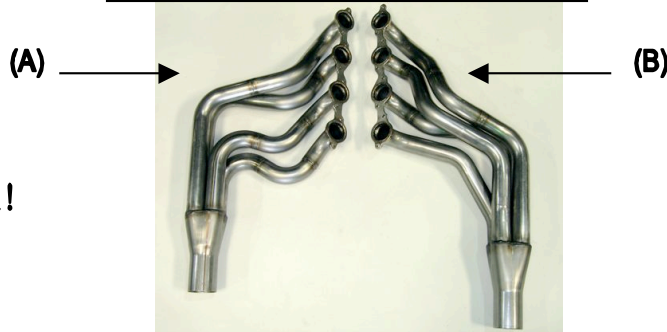
# Installation Instructions

1968-72 Chevelle (GM A-body), 396-502 Big Block Chevy stainless steel headers

**S746872**



**Please check Parts List below  
to insure that all parts  
are included in the product box !**



**Note: anti-seize should be applied to all fastener threads, pipe slip joints and mating surfaces of ball /socket connections.**

**Parts List and Description**

**Hardware List**

(A)	PN S746872L	-left side header	16	-3/8 header bolts
(B)	PN S946872R	-right side header	1	-anti-seize tube
(C)	PN S746872G	-gasket (2)		

**Note:** Installation of these headers requires adherence to certain vehicle/parts criteria in order to maintain suitability for the intended application. No relocating of the engine rearward or forward from the stock location can be accommodated. If you are installing a new GM crate engine, you may need to replace the oil pan with an original big block Chevelle oil pan or other suitable aftermarket pan. A hi-torque mini starter will need to be used to clear the header tubes. The brake proportioning valve may also need to be relocated depending on the actual valve present on your car. Lastly, you will need to modify the driver side motor mount as per the instructions contained herein.

**If you feel you are unable or unwilling to adhere to these requirements, arrange to return this product to Bassani BEFORE you attempt to install them. No returns of damaged, scratched or modified headers will be accepted.**

**Installation instructions:**

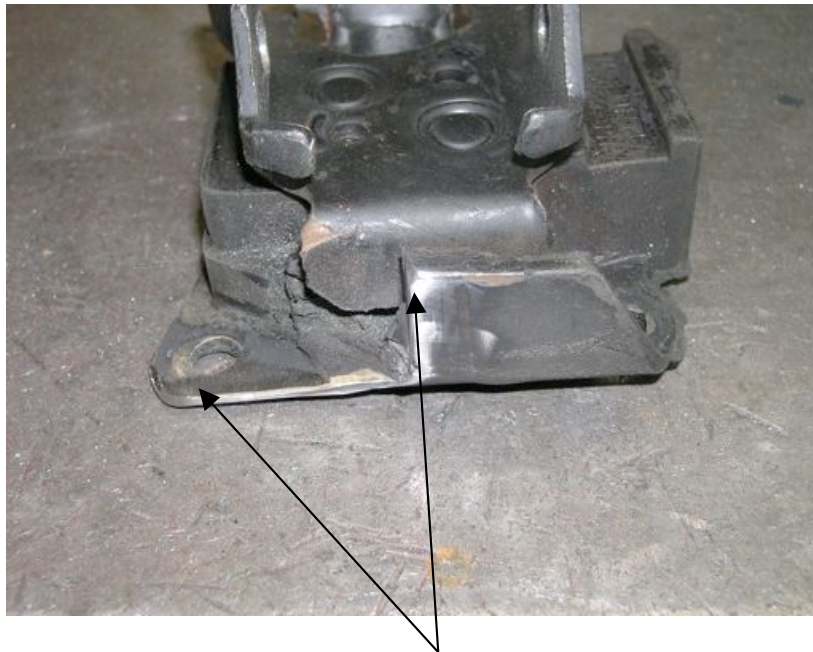
- 1.) If motor is not yet installed in vehicle, remove and modify driver side motor mount as shown in pictures on next page and then install motor in stock location.
- 2.) If motor is already installed, remove driver side motor mount from vehicle in order to perform the necessary modification. Also, remove any existing headers, exhaust manifolds, spark plugs and oil dipstick tube.
- 3.) Reinstall motor mount to side of motor and then jack-up driver side of motor as far as possible by using a small bottle jack placed under the front corner of the oil pan flange.
- 4.) Place driver side header into position through bottom of vehicle and lower the motor back onto the mount. Reinstall through-bolt and tighten all motor mount bolts.

**Continued on next page...**

**FOR TECHNICAL ASSISTANCE CALL TOLL-FREE (866) 782-3283  
2900 East La Jolla Anaheim, CA 92806**

**Installation instructions continued for S746872:**

- 5.) Install driver side header to cylinder head with supplied bolts and gaskets.
- 6.) Check clearance between the driver side header and the brake proportioning valve attached to the frame rail; relocate the valve to a more suitable location if necessary.
- 7.) Remove the starter motor from the engine to allow easy installation of the passenger side header.
- 8.) Install the passenger side header, with the remaining gasket, to the right side cylinder head with the remaining supplied bolts. The header installs through the bottom of vehicle.
- 9.) Torque all header bolts to approximately 24 lbs. ft.
- 10.) Re-install the starter motor.
- 11.) Reinstall spark plugs and oil dipstick tube.
- 12.) If installing these headers with other Bassani components, please refer to the instructions included with the particular product to complete installation.



Driver side motor mount modification; remove material between arrows.

**FOR TECHNICAL ASSISTANCE CALL TOLL-FREE (866) 782-3283  
2900 East La Jolla Anaheim, CA 92806**